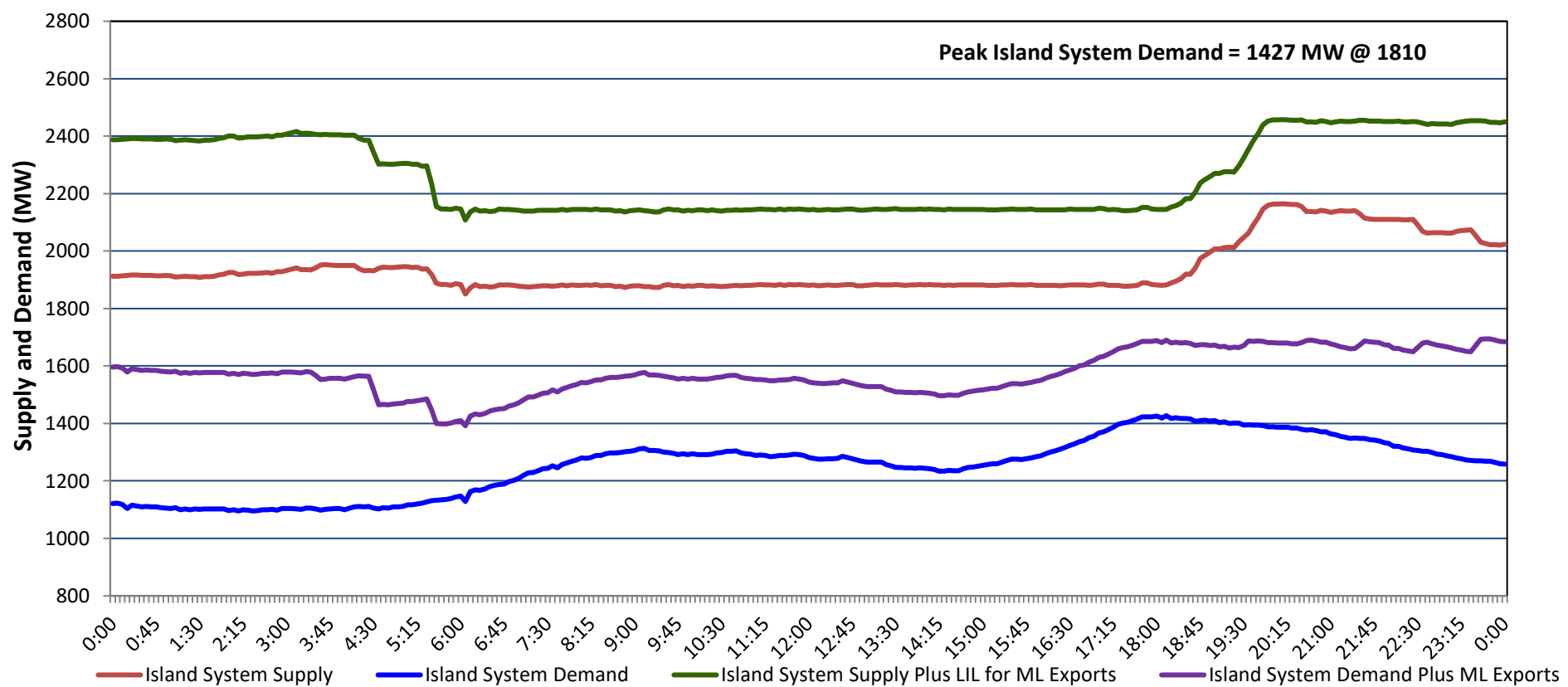


Newfoundland Labrador Hydro (NLH) Supply and Demand Status Report Filed Monday, February 10, 2025

Section 1 Island Interconnected System - Supply, Demand & Exports Actual 24 Hour System Performance For Saturday, February 08, 2025



Island Supply Notes For February 08, 2025 ¹

- A As of 0000 hours, October 20, 2024, Holyrood Unit 1 unavailable due to forced extension to planned outage (170 MW).
- B At 0607 hours, February 08, 2025, Labrador Island Link available at 450 MW due to planned derating (700 MW) - Monopole.
- C At 1810 hours, February 08, 2025, Labrador Island Link available at full capacity (700 MW) - Bipole.

Section 2 Island Interconnected System - Supply, Demand & Outlook

Sun, Feb 09, 2025	Island System Outlook ²	Seven-Day Forecast	Island System Daily Peak Demand (MW)	
			Forecast ⁸	Adjusted ⁶
Island System Supply: ⁴	1,811 MW	Sunday, February 9, 2025	1,415	1,309
NLH Island Generation: ^{3,7}	1,480 MW	Monday, February 10, 2025	1,595	1,487
NLH Island Power Purchases: ⁵	120 MW	Tuesday, February 11, 2025	1,680	1,571
NP and CBPP Owned Generation:	205 MW	Wednesday, February 12, 2025	1,690	1,580
LIL/ML Net Imports to Island: ⁹	6 MW	Thursday, February 13, 2025	1,690	1,580
		Friday, February 14, 2025	1,575	1,467
7-Day Island Peak Demand Forecast:	1,690 MW	Saturday, February 15, 2025	1,620	1,511

Island Supply Notes For February 09, 2025

- D At 0556 hours, February 09, 2025, Labrador Island Link available at 450 MW due to planned derating (700 MW) - Monopole.
- E At 0721 hours, February 09, 2025, Holyrood Unit 2 available at 145 MW due to forced derating (170 MW).
- F At 0721 hours, February 09, 2025, Holyrood Unit 3 available at 130 MW due to forced derating (150 MW).

- Notes:
1. Generation outages for running and corrective maintenance are included. These are not unusual for power system operations. They generally do not impact customer supply. Hydro schedules outages to system equipment whenever possible to coincide with periods when customer demands are low and sufficient supply reserves are available. However, from time to time equipment outages are necessary and reserves may be impacted.
 2. As of 0800 Hours.
 3. Gross continuous unit output.
 4. Gross output from all Island sources (including Note 3).
 5. NLH Island Power Purchases include: ML Imports, Exploits Generation, Rattle Brook, Star Lake, Wind Generation and capacity assistance (when applicable).
 6. Adjusted for interruptible load and the impact of voltage reduction when applicable.
 7. Due to limitations inherent in the design of combustion turbines, the output of combustion turbines may be reduced in the event that ambient temperatures exceed the threshold required for full rated output. This threshold is dependent on the design of each turbine.
 8. Does not include ML Exports.
 9. LIL Import sunk in the Island System. Actual LIL flows will be restricted by various system conditions including, but not limited to, Island Load, ML Exports and Avalon Unit status.

Section 3 Island Peak Demand and Exports Information Previous Day Actual Peak and Current Day Forecast Peak

Sat, Feb 08, 2025	Island Peak Demand ¹⁰	18:10	1,427 MW
	Exports at Peak		263 MW
	LIL Net Imports to Island		1,773 MWh
Sun, Feb 09, 2025	Forecast Island Peak Demand		1,415 MW

- Notes: 10. Island Demand is supplied by NLH generation and purchases, LIL Imports plus generation owned and operated by Newfoundland Power and Corner Brook Pulp & Paper (Deer Lake Power, DLP).